

SciPhi™ 100 bp DNA Ladder,

Ready to use

Catalogue #NXG121

Catalogue No.	Product Components		
	SciPhi™ 100 bp DNA Ladder		SciPhi™ 6X DNA Loading Dye
	Volume	Application	Volume
NXG121-L	500 µl	500	400 µl
NXG121-M	250 µl	250	200 µl
NXG121-S	100 µl	100	80 µl
NXG121-XS	10 µl	10	Not provided

Store at 4°C for up to 6 months. For prolonged periods, store at -20°C

Product Description

SciPhi™ 100 bp DNA Ladder is designed for sizing and approximate quantification of wide range double-stranded DNA on agarose gel. The ladder is composed of ten chromatography purified individual DNA (in base pairs): 1000, 900, 800, 700, 600, 500, 400, 300, 200, 100. Ladder contains one reference bands (500 bp) for easy orientation. The ladder is ready to use – it is premixed with SciPhi™ 6X DNA Loading Dye for direct loading on gel.

Loading and Storage Buffer

Composition: 10 mM Tris-HCl (pH 7.6), 10 mM EDTA, 0.005 % bromophenol blue, 0.005 % xylene cyanol FF, 0.025 % orange G and 10 % glycerol.

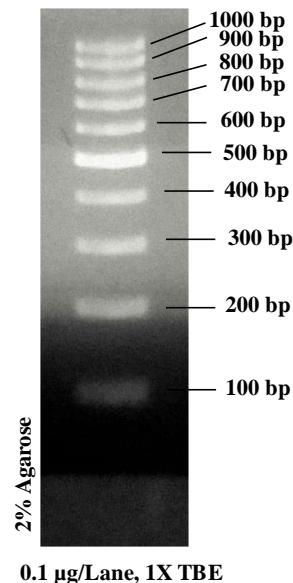
SciPhi™ 6X DNA Loading Dye

Composition:

10 mM Tris-HCl (pH 7.6), 0.03 % bromophenol blue, 0.03 % xylene cyanol FF, 0.15 % orange G, 60 % glycerol and 60 mM EDTA.

Instruction for loading DNA ladder:

Mix gently and load 1 µl per 1 mm gel lane.



Suggestions & Recommendations

- Do not heat before loading.
- Dilute your DNA sample with the 6X DNA Loading Dye (Cat#NXG112), supplied with the ladder: mix 1 volume of the dye solution with 5 volumes of the DNA sample.
- Load the same volumes of the DNA sample and the DNA ladder.
- For quantification, adjust the concentration of the sample to equalize it approximately with the amount of DNA in the nearest band of the ladder.

Troubleshooting:

For troubleshooting, please email us at info@nextgenlife.com.

