

## SciPhi™ Prestained Protein Ladder (Broad Range)

Cat No. #NXG222

Cat. No.	Product Description	Volume	Storage
NXG222	SciPhi™ Prestained Protein Ladder (Broad Range)	2 x 250 µl For 100 Applications	Store at -20°C

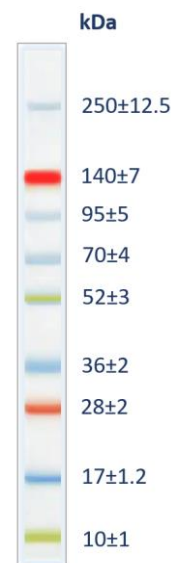
### Product Description

SciPhi™ Prestained Protein Ladder (Broad Range) is a mixture of nine recombinant proteins ranging from 10 kDa to 250 kDa. Four different chromophores (blue, red, green and orange) are bound to the proteins, producing a brightly colored ladder. The protein ladder is conveniently packaged and ready to use with no heating, diluting or additional reducing agent necessary.

**Storage buffer:** 62.5 mM Tris-H<sub>3</sub>PO<sub>4</sub> (pH 7.5 at 25°C), 1 mM EDTA, 2% SDS, 10 mM DTT, 1 mM NaN<sub>3</sub> and 33% glycerol.

### Recommendations for Loading

- Thaw the ladder at room temperature for a few minutes to dissolve precipitated solids.
- Do not boil.
- Mix gently, but thoroughly, to ensure the solution is homogeneous.
- Load the following volumes of the ladder on an SDS-polyacrylamide gel: – 5 µL per well for mini gel, – 10 µL per well for large gel.
- Use the same volumes for Western blotting.
- The loading volumes listed above are recommended for gels with a thickness of 0.75-1.0 mm.
- The loading volume should be doubled for 1.5 mm thick gels.



### Important Notes

- Do not boil the protein ladder.
- The SciPhi™ Prestained Protein Ladder (Broad Range) can be stored at 4 °C for up to 3 months.
- Prestained proteins can have different mobilities in various SDS-PAGE-buffer systems. However, they are suitable for approximate molecular weight determination when calibrated against unstained standards in the same system.
- In low-percentage gels (< 10 %), the low-molecular weight proteins in the ladder may migrate with the dye front.
- The SciPhi™ Prestained Protein Ladder (Broad Range) can be used in Western blotting with all common membranes: PVDF, nylon and nitrocellulose.
- Longer transfer times or higher transfer voltages may be required for Western blotting of large (>100 kDa) proteins.

### Troubleshooting

For troubleshooting please email us at [info@nextgenlife.com](mailto:info@nextgenlife.com).

NEXTGEN LIFE SCIENCES PVT. LTD.

F 44-45, Pankaj Central Market, I. P. Extension, Patparganj, Delhi-110092



## SciPhi™ Prestained Protein Ladder (Broad Range)

Cat No. #NXG222

Cat. No.	Product Description	Volume	Storage
NXG222	SciPhi™ Prestained Protein Ladder (Broad Range)	2 x 250 µl For 100 Applications	Store at -20°C

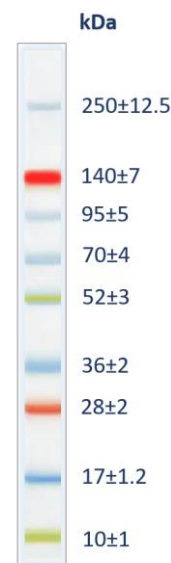
### Product Description

SciPhi™ Prestained Protein Ladder (Broad Range) is a mixture of nine recombinant proteins ranging from 10 kDa to 250 kDa. Four different chromophores (blue, red, green and orange) are bound to the proteins, producing a brightly colored ladder. The protein ladder is conveniently packaged and ready to use with no heating, diluting or additional reducing agent necessary.

**Storage buffer:** 62.5 mM Tris-H<sub>3</sub>PO<sub>4</sub> (pH 7.5 at 25°C), 1 mM EDTA, 2% SDS, 10 mM DTT, 1 mM NaN<sub>3</sub> and 33% glycerol.

### Recommendations for Loading

- Thaw the ladder at room temperature for a few minutes to dissolve precipitated solids.
- Do not boil.
- Mix gently, but thoroughly, to ensure the solution is homogeneous.
- Load the following volumes of the ladder on an SDS-polyacrylamide gel: – 5 µL per well for mini gel, – 10 µL per well for large gel.
- Use the same volumes for Western blotting.
- The loading volumes listed above are recommended for gels with a thickness of 0.75-1.0 mm.
- The loading volume should be doubled for 1.5 mm thick gels.



### Important Notes

- Do not boil the protein ladder.
- The SciPhi™ Prestained Protein Ladder (Broad Range) can be stored at 4 °C for up to 3 months.
- Prestained proteins can have different mobilities in various SDS-PAGE-buffer systems. However, they are suitable for approximate molecular weight determination when calibrated against unstained standards in the same system.
- In low-percentage gels (<10%), the low-molecular weight proteins in the ladder may migrate with the dye front.
- The SciPhi™ Prestained Protein Ladder (Broad Range) can be used in Western blotting with all common membranes: PVDF, nylon and nitrocellulose.
- Longer transfer times or higher transfer voltages may be required for Western blotting of large (>100 kDa) proteins.

### Troubleshooting

For troubleshooting please email us at [info@nextgenlife.com](mailto:info@nextgenlife.com).

NEXTGEN LIFE SCIENCES PVT. LTD.

F 44-45, Pankaj Central Market, I. P. Extension, Patparganj, Delhi-110092

